



Proudly supporting the Arts in Ipswich

## Ipswich Art Society Incorporated

Email: [info@ipswichartsociety.com.au](mailto:info@ipswichartsociety.com.au)

Address: Old Courthouse, Cnr Roderick & East Sts, Ipswich QLD 4305

Phone - President Garry 0400 800 301. Newsletter Deb 0408702973.

Post: PO Box 2375, North Ipswich QLD 4305

ABN... 13 846 673 994

## PRESIDENTS (Editor's) REPORT - MAY 2018

### Hi Everyone

As our President Garry and his wife are currently enjoying a Victorian autumn in a caravan (very brave!), I will put a few words together on his behalf.

It has been a busy month in art, and I must say how fabulous it is to see so many people getting into their creativity!

We had a really nice day at Deb's (mine) place in April, painting plein air. Eight members and some partners enjoyed the day. I have included a short report later in the newsletter.

Our Tuesday art group welcomed 2 new members, Chris and Deborah, so it is getting quite busy in the Old Courthouse now!

A reminder that this Sunday May 6th, we have the life drawing workshop at the Old Courthouse. There are still a couple of places available, please see our website [ipswichartsociety.com.au](http://ipswichartsociety.com.au) to book a place.

June's workshop will be a tutored one. Monica Buciu, an IAS member will present a workshop on portraiture. If you are not familiar with her art practice, Monica is an accomplished artist who works in oils and has a talent for portraiture. If you have wondered how to go about creating a portrait, this is your chance to have a go, with experienced help on hand.

A reminder too that we are in Show season now. There are Agricultural Shows all around the ridges for the next few months. Entry fees are generally very small, so have a go - put your favorite artworks in your local show, and let everyone see your creativity - you just might win a prize! It can be a small step to publicly showing your work for members

who are not participating in organized exhibitions.

I hope everyone has a productive month.

Deb Edwards (the Newsletter lady)

for

Garry Broadhurst

President

Ipswich Art Society Inc

## WHAT'S ON!

**May - THIS WEEKEND - a couple of spots left.**

**Life Drawing Workshop with male model.**

**Sunday May 6th**

**10 till Midday**

**Old Courthouse.**

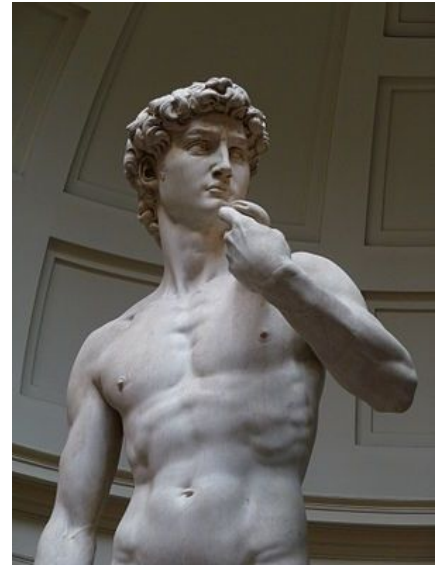
**Bring your own art materials, easels and tables provided.**

If you have not attended a life drawing class before, come along and give it a go. Drawing skills are important for art practice, and life drawing provides its own challenges.

If you don't know how it works, the model usually does a series of poses of varying times - from a few minutes to longer poses. This is great for forcing you to put marks on

paper without over thinking it, and is super for sharpening your observations skills.

**Convinced yet? Come on - it will be fun!**



## June

We have a Portrait Workshop with Monica Buciu planned for June. A flyer will be sent out when details are finalised.

## TUESDAY ART GROUP



Our Tuesday group is getting bigger and busier, with two new members joining in. The Old Courthouse is the place to be for a few hours of good company, music and a stimulating atmosphere.

For those of you that are available you are most welcome to join us, we are here every Tuesday for the 9.00am – 1.00pm art group, (untutored) cost is \$5.00, bring your

art and your lunch.

Tea and coffee are available - No bookings necessary. Come and share your ideas and skills.

Enter by rear entrance, Old Courthouse Cnr Roderick and East Sts, Ipswich. QLD 4305

## Ipswich Art Society Inc. hosts weekly Watercolour

### Classes with Lorelle Boyce



The Ipswich Art Society are pleased to be hosting their weekly tutored watercolour classes on a Saturday with professional tutor Lorelle Boyce.

Lorelle Boyce has worked in Acrylics, Pen & Ink and Watercolours for many years. She has her works hanging in many galleries around the country.

Class hours are - Saturday from 10.00 am till 2.00 pm.

Fees - \$25.00 per person Any further inquiries or bookings contact Lorelle on Phone - 0422 294 431



E-mail..... [lorelleboyce@yahoo.com.au](mailto:lorelleboyce@yahoo.com.au)

Book soon for having some more fun playing with water....These classes are suitable for beginners to advanced students. Techniques and all your questions about watercolours will be answered.



## MONTHLY MEETING UPDATE.

Monthly meetings will take place on the **FIRST TUESDAY** of each month, during the weekly Tuesday Art Group at the Old Court House.

Time - 12 midday. **Next meeting - June 5th.** If you have anything you would like discussed at the meeting but cannot attend, feel free to send an email with your suggestions.

We encourage everyone to come along, and since you're coming, bring your paints/paper/brushes/pencils and join in with the regular art group.

## WELCOME TO NEW MEMBERS

**A very big welcome to our  
two new members  
Deborah Taylor and Chris (who's  
surname I don't have, sorry Chris)**



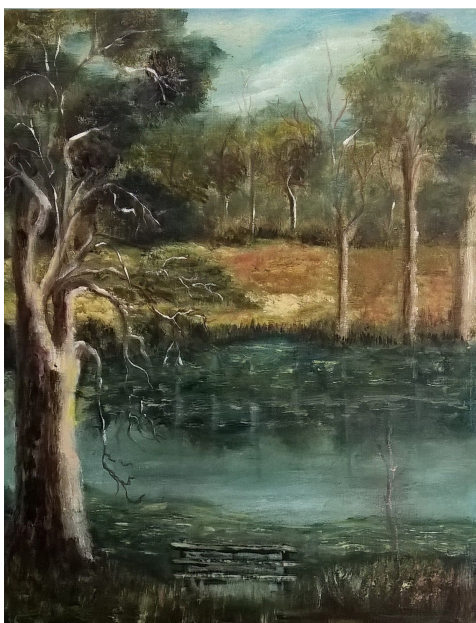
**We hope you will enjoy being part of our Society.**

**Just a reminder - membership will now run for 12 months from the date you join, so if you know anyone who is thinking of joining us, let them know they can join anytime, and they will have a full 12 months membership.**

## RECENT EVENTS

### **Plein Air painting day**

**We were blessed with lovely weather for the day at Haigslea, with just a couple of very wispy showers passing over. 8 people come along, and the landscape presented the challenge of painting water, boats, trees and horses. Everyone had a lovely time and produced some fabulous results in oils, acrylics and pastel. BBQ lunch took care of the nourishment for our busy artists, and it was lovely to see some people still going as the sun started to set. All in all a very relaxed day.**



Sylvia's fabulous oil painting was one of the artworks completed on the day.



## **MEMBERSHIP AND RENEWALS INFORMATION**

***Individual Membership:*** - \$30.00 per adult/ financial year

***Concessional Memberships:*** - \$20.00 per financial year for children & full time students and concession card holders

***Family Membership:*** - \$50.00 per financial year covers multiple family members from the same household

Membership renewals are now due on the ANNIVERSARY OF YOUR JOINING DATE every year. We look forward to your participation.

A membership form is available on our website at [www.ipswichartsociety.com.au](http://www.ipswichartsociety.com.au) , it can be filled in and submitted on line.

### **CHEQUE/MONEY ORDER**

Post to: Memberships Ipswich Art Society

Box 2375 NORTH IPSWICH, Qld, 4305.

Please enclose the completed application form (file attachment), with your payment.

### **DIRECT DEPOSIT**

Ipswich Art Society

Bank CBA, BSB - 064 417, ACCOUNT No - 00905049,

Please use your surname as reference and email the completed application form (file attachment) with your payment. Pay Pal is now available.

## **AGENDA.**

**TUESDAY 5th June - Monthly Meeting.** Held at the Old Court House, back entrance 12 midday. Everybody welcome. It's your Art Society - come and have a say on what you would like to see happening this year.

### **SATURDAY MORNING WATERCOLOUR CLASSES.**

Tutor... Lorelle Boyce.

Hours... 10.00 am – 2.00 pm

Cost..... \$25.00 per person.

Where.... Old Ipswich Courthouse. (Cnr Roderick and East Streets, Ipswich)

### **TUESDAY PAINTING CLASSES.**

Weekly untutored social painting sessions for only \$5.00 per person.

Hours.....9.00am till 2.00 pm. Morning tea and coffee provided. BYO lunch.

Where....Old Ipswich Courthouse. (Cnr. Roderick and East Sts. Ipswich)

**PORTRAIT WORKSHOP** - Details to be advised by flyer when finalised.

## NEWS - SHOW WINS - ARTICLES

### Ipswich Draft Arts and Cultural Strategy 2018-2023

We have listened to the feedback received from the local community and developed a Draft Arts and Cultural Strategy. We are now seeking feedback from the community on their priorities for the implementation of the Arts and Cultural Strategy. A short survey has been created which allows the community to have their say on which of the action items are most important to them. The survey is located at the above link and is also accessible via a link on the last page of the Draft Arts and Cultural Strategy document (Survey closes at 5pm Wednesday 2 May 2018).

#### Next steps

Following this survey, we will then finalise the Arts and Cultural Strategy and develop a five year Implementation Plan which will prioritise those action items identified by the community.

Council will then lead the implementation of the Arts and Cultural Strategy in close collaboration with our arts and cultural sector.

Please feel free to circulate this information through your networks and communities.

Kind regards,

Abbey Richards | Manager, Community Engagement  
Community Engagement Branch

Arts, Social Development and Community Engagement Department IPSWICH CITY COUNCIL T| 07 3810 7319 M| 0439 227 903

\*\*\*\*\*

### Quota Jimboomba Art Show

The Art show entries close on the 1st June 2018. We are unable to extend this timeline. Please ensure you have your entry forms in before then. Quota Jimboomba Art Show 2018 will be held from Friday 15th June to Sunday 17th June 2018.

Category A – Traditional Art Category B – Modern Art  
Category C – 3D (three dimensional) Art Category D – Students  
Category E – All Textile Works and Handicraft Category F - Photography  
Category G - Students ONLY Photography  
Category H - All Abilities Art - For people with disabilities who like to express their artistic side

Entry Form and Conditions on line [www.quotajimboomba.org.au](http://www.quotajimboomba.org.au)  
For more information Brenda Fielding  
Acting Quota Art Show Co-ordinator.e: [quotaartshow@hotmail.com](mailto:quotaartshow@hotmail.com)  
Quota Mob: 0408434018

\*\*\*\*\*

## Queensland Regional Art Awards

The Queensland Regional Art Awards (QRAA) is an annual visual arts prize and exhibition for established and emerging artists living in regional and remote Queensland. The program aims to provide a platform for further professional development.

From dirt roads to rock pools, luscious rainforests to local festivals, Queensland is a state that inspires exploration. It's full of diverse personalities, local legends and hidden gems valued by tourists and locals alike. This year, artists are asked to embrace a spirit of adventure to discover something unique about their own community or one that they visit within the state.

The theme is to be addressed in an accompanying artist statement of 100 – 150 words.

All entries are eligible for the \$10,000 Flying Arts 'Art for Life' Award and for selection in the touring exhibition. Enter by 29 June to qualify for Early Bird Prices.

Entries now open. For all enquiries, email: [exhibitions@flyingarts.org.au](mailto:exhibitions@flyingarts.org.au)

\*\*\*\*\*

## Exhibition of New Works by Colleen Gardener



**Where:** My studio & gallery, [35 Queen St. Harrisville](#). ( in the old National Bank of Queensland).

**When:** Opening on 19th May through to 27th May, 9am to 5pm.

Members and friends are welcome and can email or PM me on facebook for further details.

There will be plein air landscapes, florals and still life on display.

Thank you in anticipation.

## ART RELATED ADVERTISEMENTS

I include these two requests for information one more time - we had no response last month, so we include them again, in case they were missed last month. Please read, and if you can assist, please send an email to me and I can pass it on, or contact the writer direct. I am sure the enquirers would be most appreciative.

Seeking information on artist ELLEN HARTRIDGE. I have 2 old paintings one of which has this name on it. I beleive my father got the works from my grandparents who came from Ipswich (grandmother) and Felixstowe (grandfather.) My understanding is that Ellen Hartridge was a female artist from Woodbridge who lived from 1868 to 1951. Thank you, Bill Cotton Venice, Florida. You can contact Bill direct at [wcotton1619@gmail.com](mailto:wcotton1619@gmail.com) if you are able to assist.

\*\*\*\*\*

A friend is writing a biography of a Brisbane artist, Melville R. Haysom, who died in 1968. Would it be possible to ask among Ipswich Art Society members for anyone who has memories of Mr Haysom?

Some of his paintings can be seen on the internet, but she is hoping to find others, and to learn more of this interesting artist's life.

Hoping you can help,  
Kind regards,  
Sue White (The Fernvale Artists)

Members advertising is free. If you have any art related activities that you hold, or art materials that you would like to sell or give away please send your advertising content by email for inclusion in our next newsletter.

Advertising content will be considered as to its suitability and may be run for several months dependent on available space. All inquiries to Deb at [daveanddeb00@gmail.com](mailto:daveanddeb00@gmail.com)

As we enter the cold winter months, outdoor activities for many will be put aside for a bit. The grass doesn't need mowing so much and the plants are dormant. So get out your art gear, and set it up in a warm place.  
Spend some time exercising the other side of your brain - it is good for your health and your heart.

Cheers, Deb.

**“Art washes away from the soul the dust of everyday life.”**

**Pablo Picasso**